

# Wootton Academy Trust



## Promoting British Values at Wootton Academy Trust Institutions

At Wootton Academy Trust we actively promote positive, inclusive values. These include democracy, the rule of law, individual liberty, and mutual respect for and tolerance of those of different faiths and beliefs. We believe British values are those values expected of anyone living in Britain, regardless of their nationality, culture or religious belief.

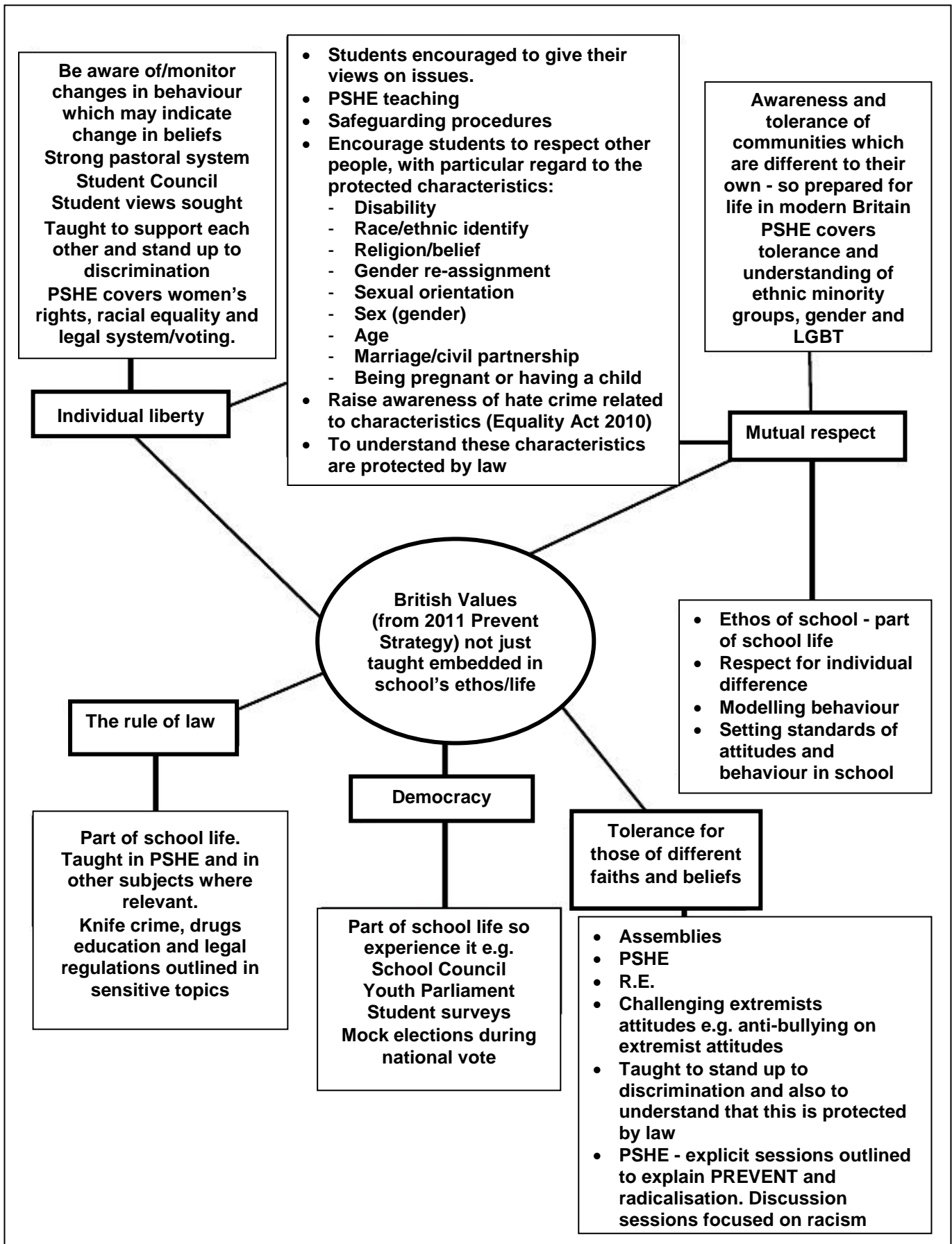
Our ethos reflects these values. We place great emphasis on building positive relationships in school, amongst the students themselves and between staff and students. We strongly believe students should not merely be taught such values but that they are embedded into school life and how we do things.

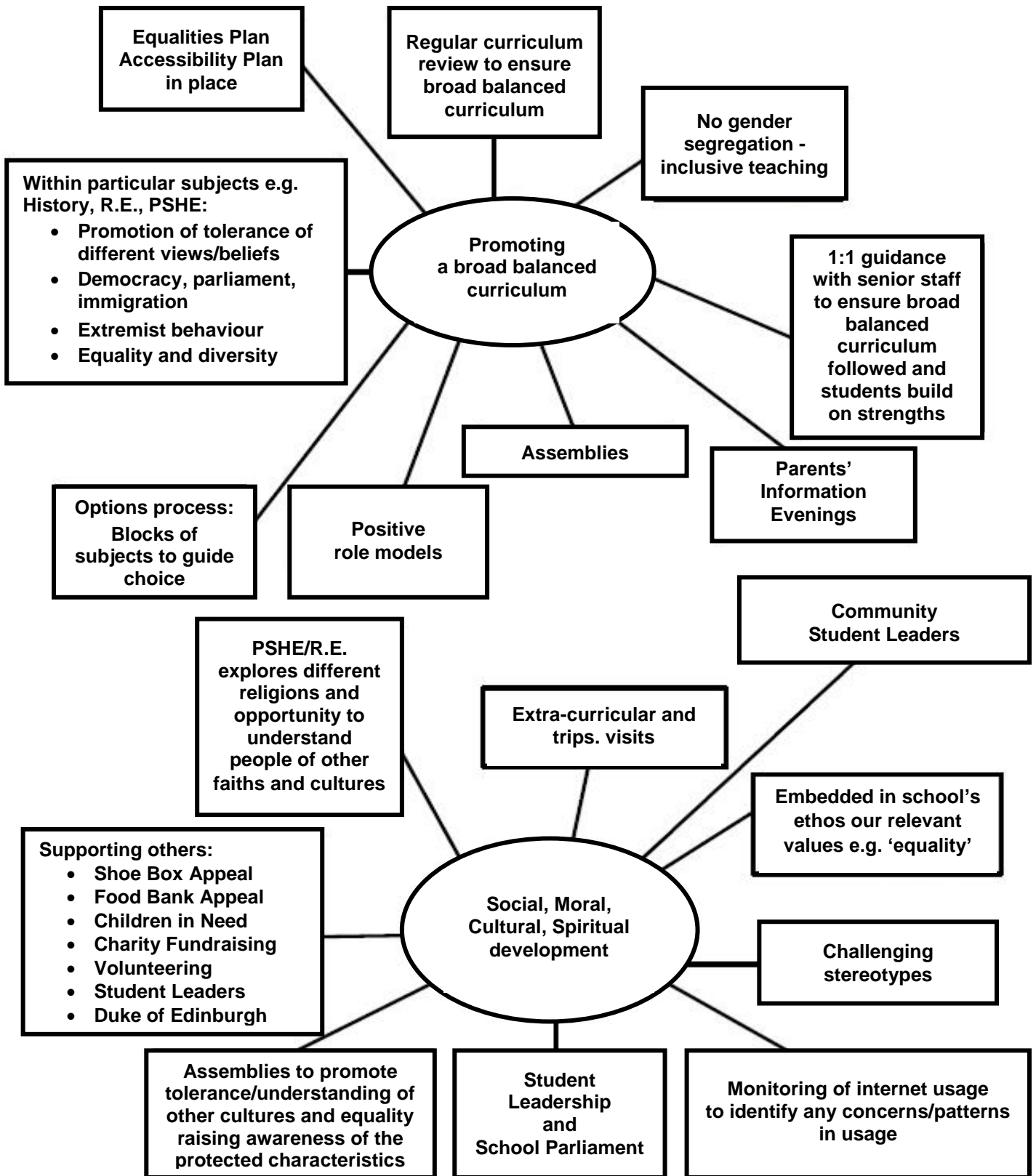
We strive to support our students to develop into confident, happy, successful young adults who have empathy towards and an understanding of those less fortunate than themselves.

The information below reflects how Wootton Academy Trust works to promote positive values through the ethos and life of the school, for example through a broad and balanced curriculum, and through social, moral, cultural and spiritual development.

If you require additional information about promoting British values and preventing extremism/radicalisation please explore the following link which has a section specifically for parents: <http://www.educateagainsthate.com/>

If you require additional information about promoting British values and preventing extremism/radicalisation please explore the following link which has a section specifically for parents: <http://www.educateagainsthate.com/>





The DFE has recently reinforced the need *“to create and enforce a clear and rigorous expectation on all schools to promote the fundamental British values of democracy, the rule of law, individual liberty and mutual respect and tolerance of those with different faiths and beliefs.”*

The government set out its definition of British values in the 2011 Prevent Strategy; these values have been reiterated by the Prime Minister this year. At Wootton Academy Trust these values are reinforced regularly and in the following ways:

➤ **Democracy:**

Students have the opportunity to have their voices heard through our Year Group and School Parliament. The Year Group parliament includes representatives from every tutor group. The year group then elects from within its number representatives to the School Parliament. The School Parliament meets each half term with cycles of themes, whole school and year group meetings. Decisions and suggestions are fed back to the Heads of Year and then onto the Leadership Team. Two members of the School Parliament represent students on the school and college Advisory Bodies.

➤ **The Rule of Law:**

The importance of Laws whether they be rules that govern the class, the school or laws governing the country, are consistently reinforced throughout the school day, as well as when dealing with behaviour through school policies and procedures. Students are taught as part of their PSHE curriculum and elsewhere the value and reasons behind laws, that they govern and protect us, the responsibilities that this involves and the consequences when laws are broken. Visits from authorities such as the Police and other support services are regular parts of our calendar and help reinforce this message.

➤ **Individual Liberty:**

Within school, students are actively encouraged to make good choices, knowing that they are in a safe and supportive environment. As a Trust we educate and provide boundaries for young students to make choices safely, through of provision of a safe environment and empowering education. Students are encouraged to know, understand and exercise their rights and personal freedoms and are advised how to

exercise these safely, for example through our E-Safety and PSHE lessons. Whether it be through choice of challenge, of how they record, of participation in our numerous extra-curricular clubs and opportunities, pupils are given the freedom to make choices. All staff have been told that they must challenge extremist views in lessons or elsewhere on the site or on official trips and visits off site.

➤ **Mutual Respect:**

Part of our ethos and behaviour policy has revolved around core values: such as honesty, consideration, integrity, care and mutual respect. Our ethos promotes respect for others and this is reiterated through our individual classroom rules, as well as our behaviour policy. The Trust produces its own Equality and Diversity Calendar.

➤ **Tolerance of those of Different Faiths and Beliefs:**

This is achieved through enhancing students understanding of their place in a culturally diverse society and by giving them opportunities to experience such diversity. Assemblies and discussions involving prejudices and prejudice-based bullying have been followed and supported by learning in RS and PSHE.