

# STUDENT BULLETIN: MON 08<sup>th</sup> FEB

## PHYSICAL CHALLENGE



In honour of Captain Sir Tom Moore - This week's Physical Challenge is simple: **Who can record the most miles in a week?** From Monday 8<sup>th</sup> Sunday 14<sup>th</sup> Feb – keep a record of how many miles you walk/ run/ cycle or row each day – send in your totals to: [Studentbulletin@wootton.beds.sch.uk](mailto:Studentbulletin@wootton.beds.sch.uk)

## THOUGHT / QUOTE OF THE WEEK



## CREATIVE CHALLENGE

We were all sorry to hear about the passing of Local hero Captain Sir Tom Moore – we would like to send a sympathy card to his family on behalf of the trust.

**We need your contributions:**

1. Please send in your designs for the front of the card. (One will be chosen)
2. Please send your individual messages to be written in the card to: [studentbulletin@wootton.beds.sch.uk](mailto:studentbulletin@wootton.beds.sch.uk)



## CAREERS & NEXT STEPS

**Unifrog – log activities and skills. Look up careers. Search for courses and jobs:** [www.unifrog.org](http://www.unifrog.org)

**Virtual Work Experience:**

<https://www.speakersforschools.org/experience-2/young-people/take-part/>

**National Apprenticeship Show 10<sup>th</sup> February:** <https://nas.vfairs.com/>

**Meet the Russell Group – 10<sup>th</sup> February:** <https://russellgroup.vfairs.com/en>

**UK University and Apprenticeship Show: 27<sup>th</sup> January:**

<https://ukuniversitysearch.vfairs.com/>

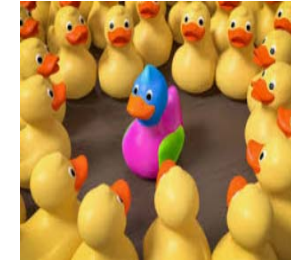
## BRAIN TEASER

Guess the next three letters in the series G N T L \_ \_ \_

Email your answers to address below!!

## ENRICHMENT

Each and every one of you is different - it is what makes you special. Write a letter to yourself celebrating your uniqueness. Listen to this poem: it perfectly summarises why it is important to embrace



<https://www.youtube.com/watch?v=5KmHWjzyVYw>

## INCLUSION FOCUS: BOOK / FILM CLUB



"I Am Sam" is the compelling story of Sam Dawson, a mentally-challenged father raising his daughter Lucy with the help of a unique group of friends. As Lucy turns seven and begins to intellectually surpass her father, their close bond is threatened when their unconventional living arrangement comes to the attention of a social worker who wants Lucy placed in foster care.

Please send in any film/book recommendations!!

## WORD OF THE WEEK

# Discombobulate

'to disconcert or confuse someone'

## GET INVOLVED

Please send any ideas or contributions for the student bulletin to: [studentbulletin@wootton.beds.sch.uk](mailto:studentbulletin@wootton.beds.sch.uk)

The names of all of those who get involved will go into a draw to win an amazon voucher!!

## WELLBEING RESOURCES

**Staying Safe Online**

<https://www.thinkuknow.co.uk/14-plus/>

**General Student Welfare:**

<https://www.woottonupper.co.uk/student-welfare>

**Mental Health/ Anxiety:** <https://calmharm.co.uk/>

<https://www.clearfear.co.uk/> <https://www.kooth.com/>

**Bereavement:**

<https://www.cruse.org.uk/> <https://www.winstonswish.org/>

**Gender Identity / sexual orientation:**

<https://mermaidsuk.org.uk/> <https://www.theproudtrust.org/>



## KEY UPDATES:

**January Prizes for Student Bulletin Contribution:** The following students were picked out of the draw to each win a **£10 Amazon Voucher:** Eleanor Hogben (Y9) and Benjamin Stacey (Y12) Well done!! **Your prize will be in the post soon!!** 😊

**Reminder: Y10 Parents Consultation Event:** Thursday 11<sup>th</sup> February

**12<sup>th</sup> February:** Happy ½ term everyone – you have been awesome this term, have a good rest and stay safe!! 😊

## KEY DATES:

LGBT History Month ❤️

**Tues 9<sup>th</sup>** Safer internet day

**Fri 12<sup>th</sup>** Chinese New Year

**Sun 14<sup>th</sup>** Valentines Day

**Tues 16<sup>th</sup>** Shrove Tuesday

**Wed 17<sup>th</sup>** Ash Wednesday

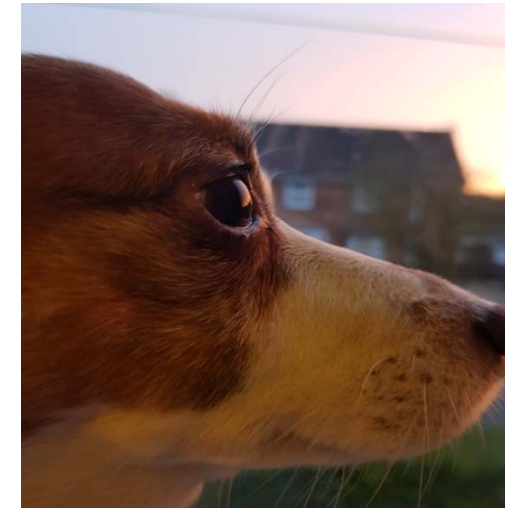
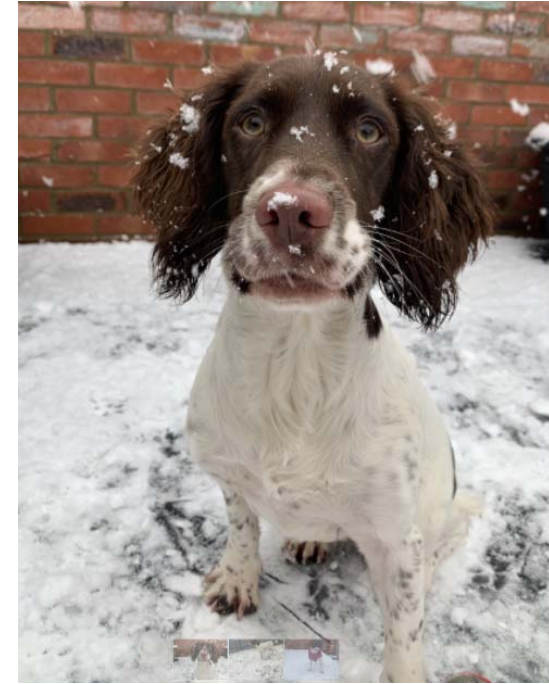
# Last Week's Creative Challenge!



## CREATIVE CHALLENGE



Some of you have been getting creative with the camera –  
this week's challenge is to capture photographs of your pets –  
please send your images to  
[studentbulletin@wootton.beds.sch.uk](mailto:studentbulletin@wootton.beds.sch.uk)



# Thank you for sharing!